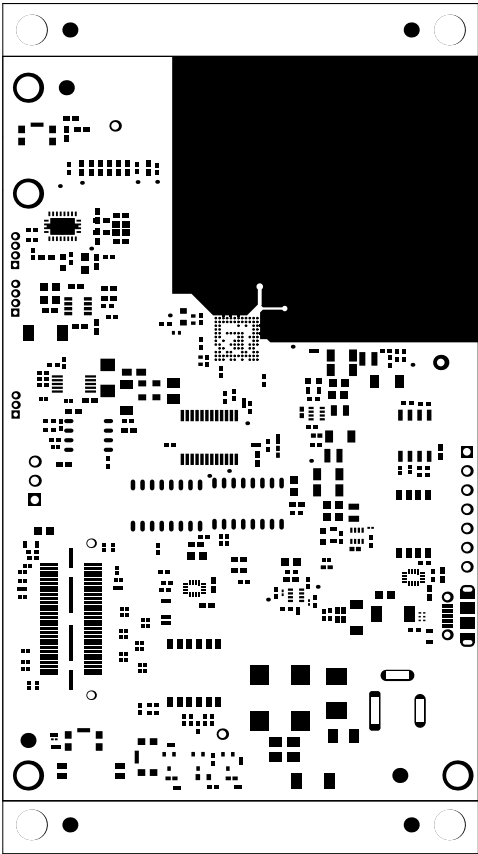
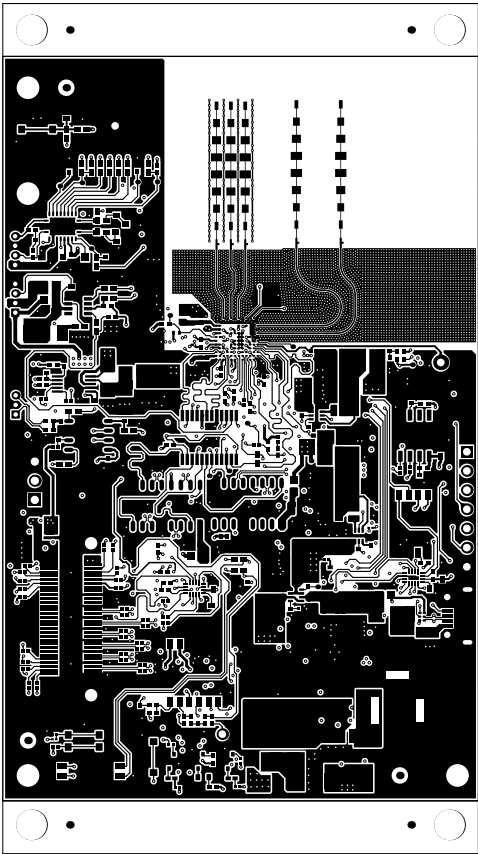


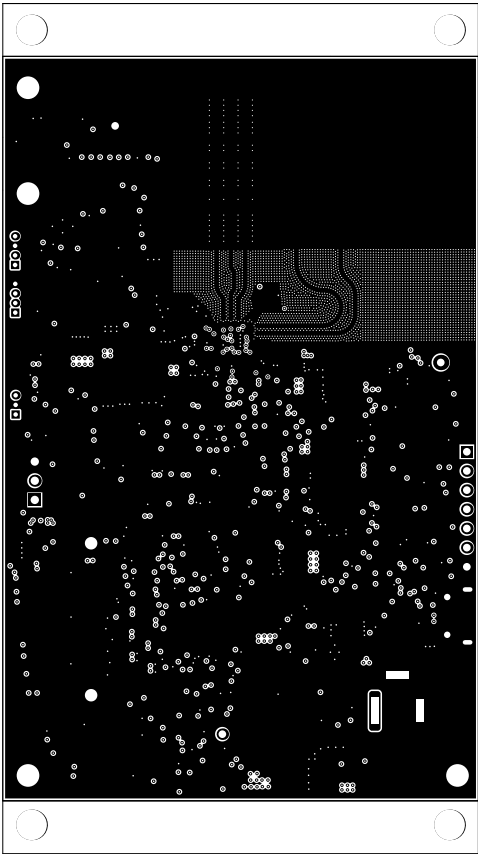
ALL ARTWORK VIEWED FROM TOP SIDE	BOARD #:PROC176A	REV: A	SUN REV: 2993 [Scheduled for deletion]
LAYER NAME = Top Overlay	TID #: N/A		
PLOT NAME = Top Overlay	GENERATED : 14-03-2024 18:36:40		TEXAS INSTRUMENTS



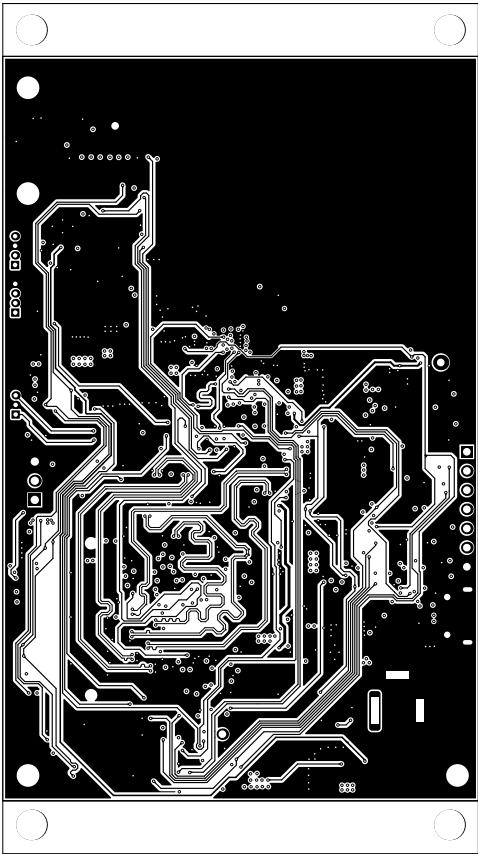
ALL ARTWORK VIEWED FROM TOP SIDE	BOARD #:PROC176A	REV: A	SUN REV: 2993 [Scheduled for deletion]
LAYER NAME = Top Solder	TID #: N/A		
PLOT NAME = Top Solder Mask	GENERATED : 14-03-2024 18:36:40		TEXAS INSTRUMENTS



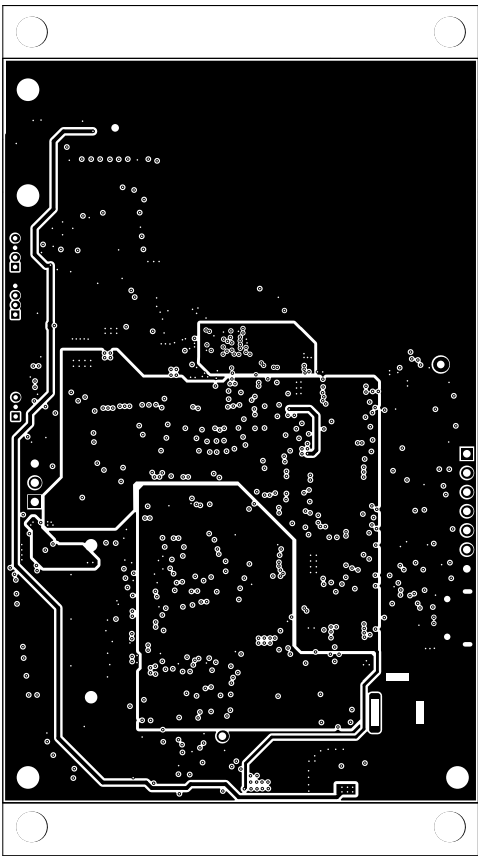
ALL ARTWORK VIEWED FROM TOP SIDE	BOARD #:PROC176A	REV: A	SUN REV: 2993 [Scheduled for deletion]
LAYER NAME = Top Layer	TID #: N/A		
PLOT NAME = Top Layer	GENERATED : 14-03-2024 18:36:40		TEXAS INSTRUMENTS



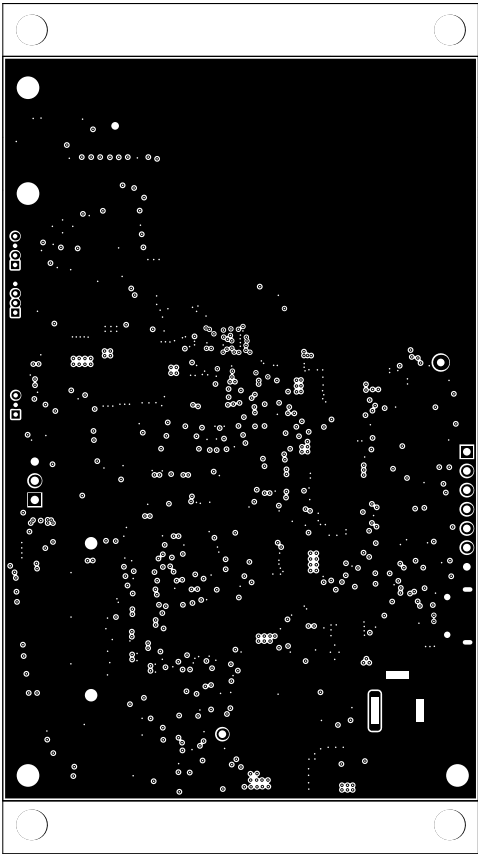
ALL ARTWORK VIEWED FROM TOP SIDE	BOARD #:	PROC176A	REV:	A	SUN REV:	2993 [Scheduled for deletion]
LAYER NAME =	L2_GND1	TID #:	N/A			
PLOT NAME =	Signal Layer 1	GENERATED	:	14-03-2024 18:36:41	TEXAS INSTRUMENTS	



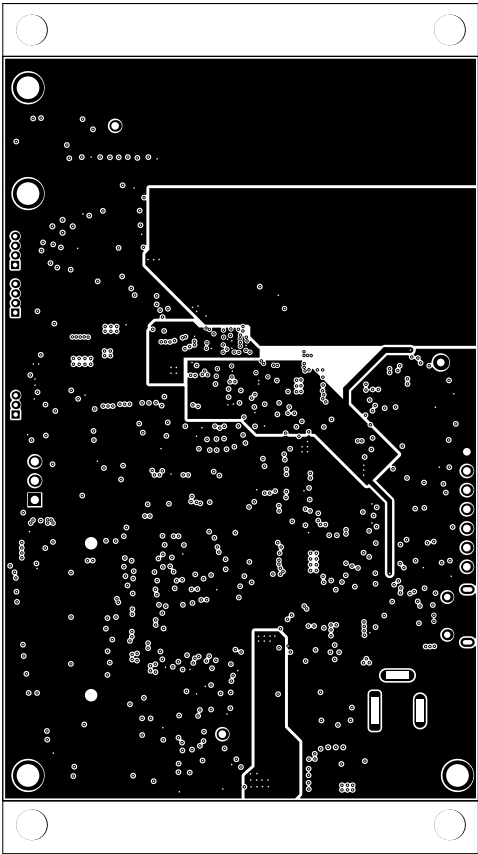
ALL ARTWORK VIEWED FROM TOP SIDE	BOARD #:PROC176A	REV: A	SUN REV: 2993 [Scheduled for deletion]
LAYER NAME = L3_SIG1	TID #: N/A		
PLOT NAME = Signal Layer 2	GENERATED : 14-03-2024 18:36:41		TEXAS INSTRUMENTS



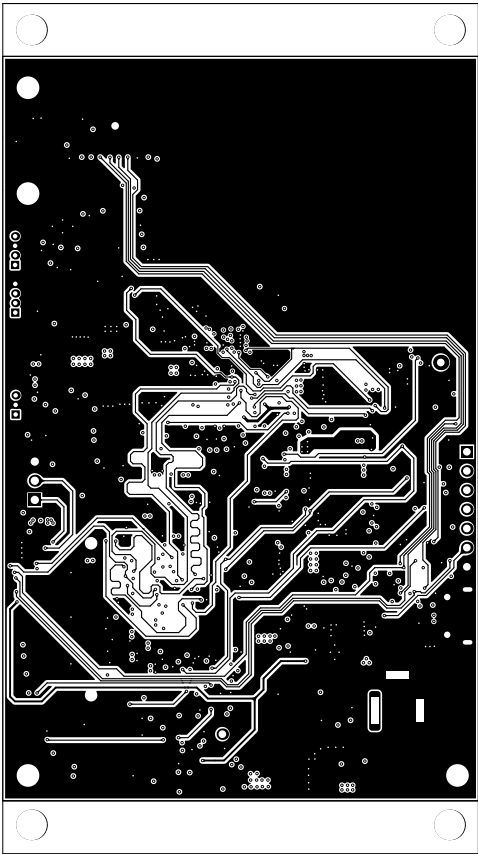
ALL ARTWORK VIEWED FROM TOP SIDE	BOARD #:PROC176A	REV: A	SUN REV: 2993 [Scheduled for deletion]
LAYER NAME = L5_PWR2	TID #: N/A		
PLOT NAME = Signal Layer 3	GENERATED : 14-03-2024 18:36:41		TEXAS INSTRUMENTS



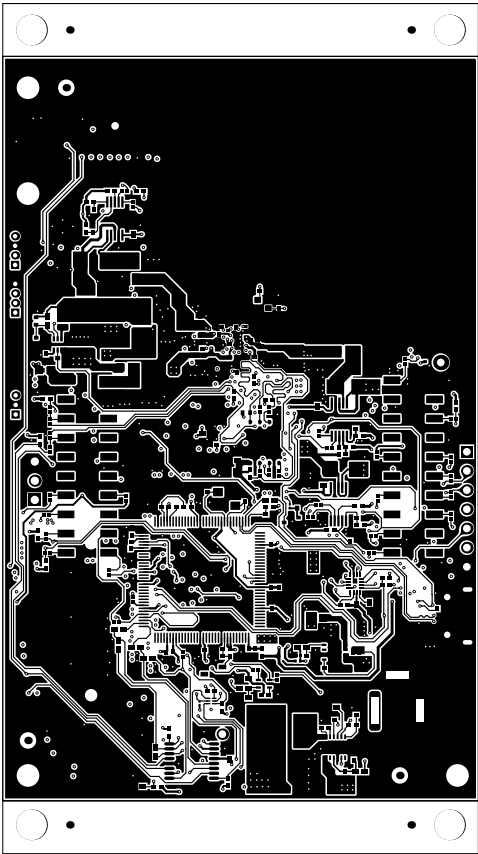
ALL ARTWORK VIEWED FROM TOP SIDE	BOARD #:PROC176A	REV: A	SUN REV: 2993 [Scheduled for deletion]
LAYER NAME = L7_GND2	TID #: N/A		
PLOT NAME = Signal Layer 4	GENERATED : 14-03-2024 18:36:41		TEXAS INSTRUMENTS



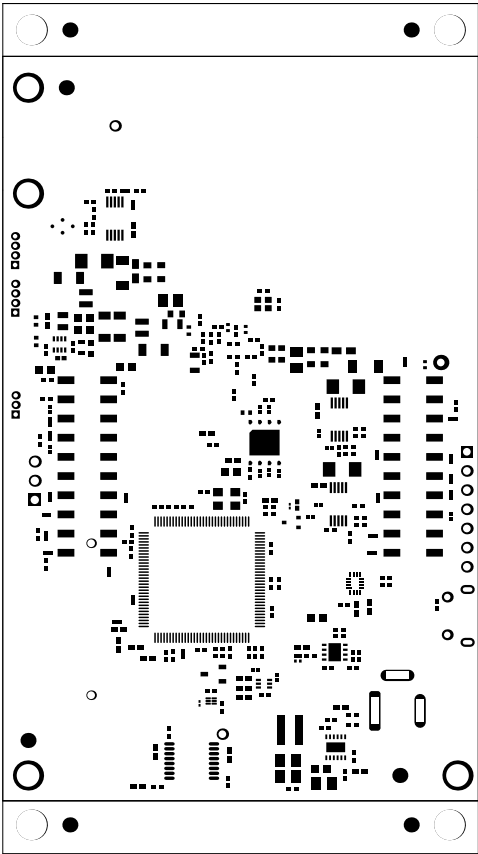
ALL ARTWORK VIEWED FROM TOP SIDE	BOARD #:PROC176A	REV: A	SUN REV: 2993 [Scheduled for deletion]
LAYER NAME = L4_PWR1	TID #: N/A		
PLOT NAME = Signal Layer 5	GENERATED : 14-03-2024 18:36:41		TEXAS INSTRUMENTS



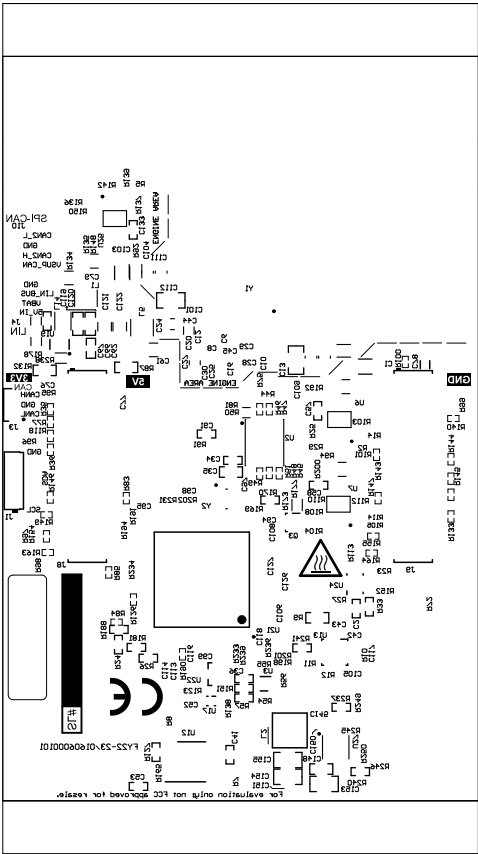
ALL ARTWORK VIEWED FROM TOP SIDE	BOARD #:PROC176A	REV: A	SUN REV: 2993 [Scheduled for deletion]
LAYER NAME = L6_SIG2	TID #: N/A		
PLOT NAME = Signal Layer 6	GENERATED : 14-03-2024 18:36:42		TEXAS INSTRUMENTS



ALL ARTWORK VIEWED FROM TOP SIDE	BOARD #:PROC176A	REV: A	SUN REV: 2993 [Scheduled for deletion]
LAYER NAME = Bottom Layer	TID #: N/A		
PLOT NAME = Bottom Layer	GENERATED : 14-03-2024 18:36:42		TEXAS INSTRUMENTS



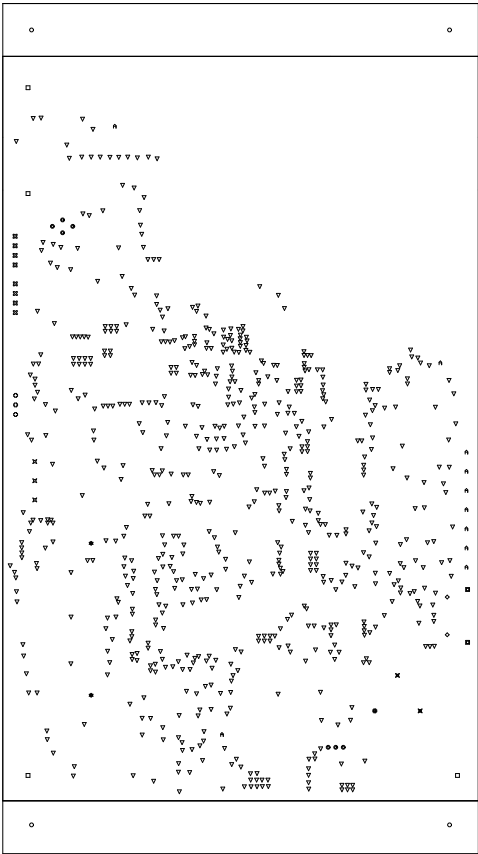
ALL ARTWORK VIEWED FROM TOP SIDE	BOARD #:PROC176A	REV: A	SUN REV: 2993 [Scheduled for deletion]
LAYER NAME = Bottom Solder	TID #: N/A		
PLOT NAME = Bottom Solder Mask	GENERATED : 14-03-2024 18:36:42		TEXAS INSTRUMENTS



ALL ARTWORK VIEWED FROM TOP SIDE	BOARD #:PROC176A	REV: A	SUN REV: 2993 [Scheduled for deletion]
LAYER NAME = Bottom Overlay	TID #: N/A		
PLOT NAME = Bottom Overlay	GENERATED : 14-03-2024 18:36:42		TEXAS INSTRUMENTS

Symbol	Count	Hole Size	Plated	Hole Type	Drill Layer Pair	Via/Pad	Pad Shape	Hole Tolerance (+)	Hole Tolerance (-)
⊕	1	39.37mil (1.000mm)	PTH	Rectangle	Top Layer - Bottom Layer	Pad	Rounded Rectangle	3.94mil (0.100mm)	3.94mil (0.100mm)
◻	2	23.62mil (0.600mm)	PTH	Slot	Top Layer - Bottom Layer	Pad	Rounded	3.00mil (0.076mm)	3.00mil (0.076mm)
◇	2	33.47mil (0.850mm)	PTH	Round	Top Layer - Bottom Layer	Pad	Rounded	3.00mil (0.076mm)	3.00mil (0.076mm)
×	2	39.37mil (1.000mm)	PTH	Rectangle	Top Layer - Bottom Layer	Pad	Rounded	3.94mil (0.100mm)	3.94mil (0.100mm)
✱	2	40.16mil (1.020mm)	NPTH	Round	Top Layer - Bottom Layer	Pad	Rounded	2.00mil (0.051mm)	2.00mil (0.051mm)
⊗	3	23.62mil (0.600mm)	PTH	Round	Top Layer - Bottom Layer	Pad	(Mixed)	3.00mil (0.076mm)	3.00mil (0.076mm)
⊠	3	43.31mil (1.100mm)	PTH	Round	Top Layer - Bottom Layer	Pad	(Mixed)	3.00mil (0.076mm)	3.00mil (0.076mm)
◻	4	118.11mil (3.000mm)	PTH	Round	Top Layer - Bottom Layer	Pad	Rounded	3.00mil (0.076mm)	3.00mil (0.076mm)
○	4	160.00mil (4.064mm)	NPTH	Round	Top Layer - Bottom Layer	Pad	Rounded	2.00mil (0.051mm)	2.00mil (0.051mm)
⊙	7	7.87mil (0.200mm)	PTH	Round	Top Layer - Bottom Layer	Via	Rounded		
⊗	8	23.62mil (0.600mm)	PTH	Round	Top Layer - Bottom Layer	Pad	(Mixed)		
A	10	40.00mil (1.016mm)	PTH	Round	Top Layer - Bottom Layer	Pad	(Mixed)	3.00mil (0.076mm)	3.00mil (0.076mm)
▽	684	8.00mil (0.203mm)	PTH	Round	Top Layer - Bottom Layer	Via	Rounded	3.00mil (0.076mm)	3.00mil (0.076mm)
✱	3505	5.90mil (0.150mm)	PTH	Round	Top Layer - L2_GND1	Via	Rounded	0.00mil (0.000mm)	5.90mil (0.150mm)
	4237 Total								

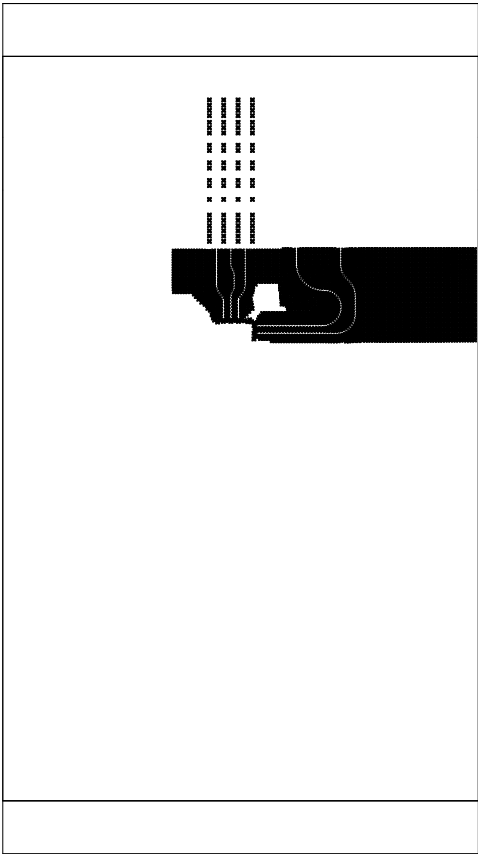
Slot definitions : Routed Path Length = Calculated from tool start centre position to tool end centre position.
Hole Length = Routed Path Length + Tool Size = Slot length as defined in the PCB layout



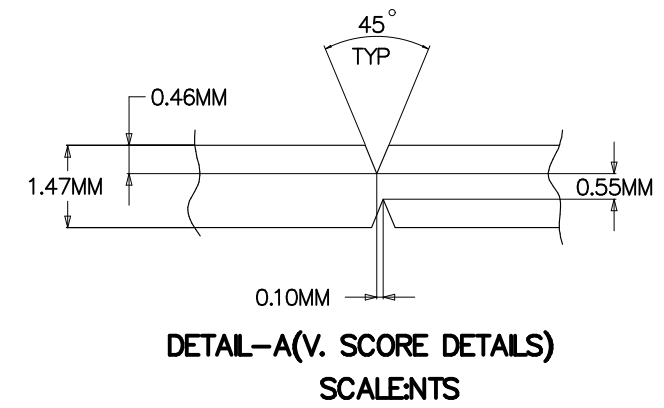
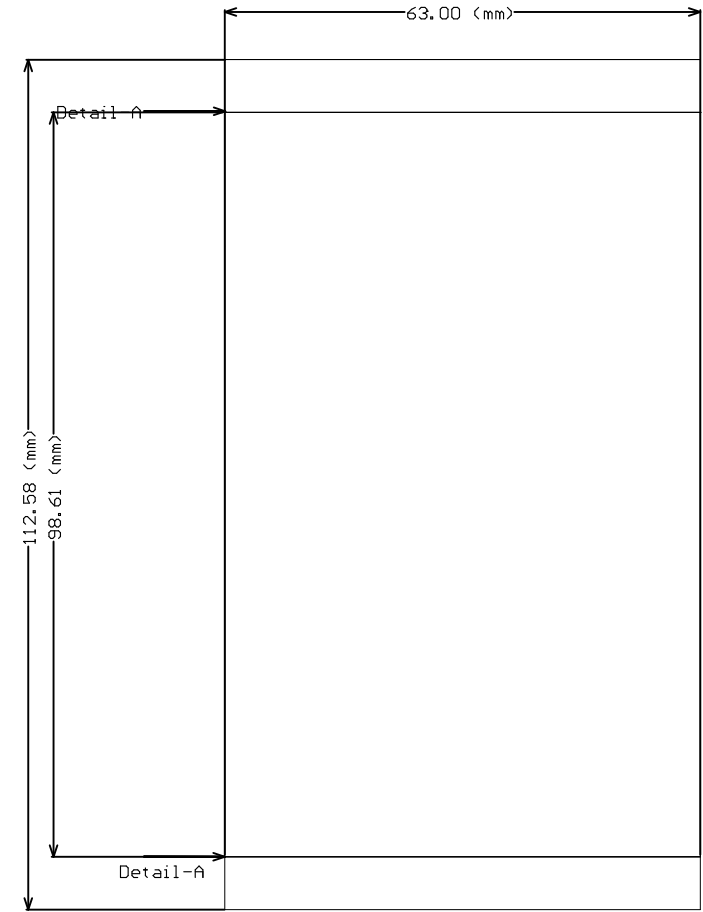
ALL ARTWORK VIEWED FROM TOP SIDE	BOARD #:PROC176A	REV: A	SUN REV: 2993 [Scheduled for deletion]
LAYER NAME = Drill Drawing	TID #: N/A		
PLOT NAME = Drill Drawing	GENERATED : 14-03-2024 18:36:43	TEXAS INSTRUMENTS	

Symbol	Count	Hole Size	Plated	Hole Type	Drill Layer Pair	Via/Pad	Pad Shape	Hole Tolerance (+)	Hole Tolerance (-)
⊕	1	39.37mil (1.000mm)	PTH	Rectangle	Top Layer - Bottom Layer	Pad	Rounded Rectangle	3.94mil (0.100mm)	3.94mil (0.100mm)
◇	2	23.62mil (0.600mm)	PTH	Slot	Top Layer - Bottom Layer	Pad	Rounded	3.00mil (0.076mm)	3.00mil (0.076mm)
▣	2	33.47mil (0.850mm)	PTH	Round	Top Layer - Bottom Layer	Pad	Rounded	3.00mil (0.076mm)	3.00mil (0.076mm)
⊗	2	39.37mil (1.000mm)	PTH	Rectangle	Top Layer - Bottom Layer	Pad	Rounded	3.94mil (0.100mm)	3.94mil (0.100mm)
▽	2	40.16mil (1.020mm)	NPTH	Round	Top Layer - Bottom Layer	Pad	Rounded	2.00mil (0.051mm)	2.00mil (0.051mm)
⊠	3	23.62mil (0.600mm)	PTH	Round	Top Layer - Bottom Layer	Pad	<Mixed>	3.00mil (0.076mm)	3.00mil (0.076mm)
□	3	43.31mil (1.100mm)	PTH	Round	Top Layer - Bottom Layer	Pad	<Mixed>	3.00mil (0.076mm)	3.00mil (0.076mm)
⊙	4	118.11mil (3.000mm)	PTH	Round	Top Layer - Bottom Layer	Pad	Rounded	3.00mil (0.076mm)	3.00mil (0.076mm)
▼	4	160.00mil (4.064mm)	NPTH	Round	Top Layer - Bottom Layer	Pad	Rounded	2.00mil (0.051mm)	2.00mil (0.051mm)
★	7	7.87mil (0.200mm)	PTH	Round	Top Layer - Bottom Layer	Via	Rounded		
☆	8	23.62mil (0.600mm)	PTH	Round	Top Layer - Bottom Layer	Pad	<Mixed>		
○	10	40.00mil (1.016mm)	PTH	Round	Top Layer - Bottom Layer	Pad	<Mixed>	3.00mil (0.076mm)	3.00mil (0.076mm)
⊠	684	8.00mil (0.203mm)	PTH	Round	Top Layer - Bottom Layer	Via	Rounded	3.00mil (0.076mm)	3.00mil (0.076mm)
⊗	3505	5.90mil (0.150mm)	PTH	Round	Top Layer - L2_GND1	Via	Rounded	0.00mil (0.000mm)	5.90mil (0.150mm)
	4237 Total								

Slot definitions : Routed Path Length = Calculated from tool start centre position to tool end centre position.
Hole Length = Routed Path Length + Tool Size = Slot length as defined in the PCB layout



ALL ARTWORK VIEWED FROM TOP SIDE	BOARD #:PROC176A	REV: A	SUN REV: 2993 [Scheduled for deletion]
LAYER NAME = Drill Drawing	TID #: N/A		
PLOT NAME = Drill Drawing	GENERATED : 14-03-2024 18:36:44		TEXAS INSTRUMENTS



ALL ARTWORK VIEWED FROM TOP SIDE	BOARD #:PROC176A	REV: A	SUN REV: 2993 [Scheduled for deletion]
LAYER NAME =	TID #: N/A		
PLOT NAME = Board Dimensions	GENERATED : 14-03-2024 18:37:09		TEXAS INSTRUMENTS